



A Series Internal Combustion Forklift

with capacities of 20,000 to 25,000kg



HANGCHA GROUP CO., LTD.

Factory site: 666 Xiangfu Road,
Hangzhou, Zhejiang, China (311305)

Tel: +86-571-88926735 88926755
Fax: +86-571-88926789 88132890

sales@hcforklift.com
www.hcforklift.com



Follow us on
Facebook



Follow us on
YouTube



Follow us on
WeChat



Download "Hangcha
Forklift" App



ISO45001
ISO45001:2018



ISO14001
ISO14001:2015



ISO9001
ISO9001:2015



HANGCHA trucks conform
to the European Safety
Requirements.

2024 VERSION 1.1 COPYRIGHT 2024/08

HANGCHA GROUP CO., LTD. reserves the right to make any changes without notice concerning colors, equipment, or specifications detailed in this brochure, or to discontinue individual models. The colors of trucks, delivered may differ slightly from those in brochures.

The World of Hangcha
SINCE 1956



A Series Internal Combustion Forklift

The A series 20-25t forklifts are an independently developed new series of internal combustion counterweight forklifts. With the key parts of domestically renowned brands, the cost-effective vehicle has stable performance and reliable quality. The all-purpose products are suitable for ports, railways, steel mills, mines, shipyards and rental markets.



Mature/ Reliable



The Weichai common rail engine has strong power, low fuel consumption and a low failure rate

- / High torque at low speeds, good performance of acceleration at medium and high speeds.
- / The four-air-valve structure has high air intake efficiency, full combustion and good economy.
- / Direct injection in the cylinder improves combustion efficiency and effectively reduces engine fuel consumption and vibration.
- / A super long oil change interval of 500 hours enables a low use cost.
- / Can be used in an environment of -35°C —50°C and an altitude of above 5000m.



The paralleled aluminum plate-fin heat dissipaters and the original hyperboloidal fan of the engine provide reliable heat dissipation

- / The heat dissipation systems are independent of each other to avoid heat dissipation interference.
- / The engine's original large-diameter, low-speed (fan shaft deceleration ratio) hyperboloidal suction fan has good matching, stable operations and large heat dissipation power.
- / The independent hydraulic oil heat dissipater ensures the normal operations of the system under heavy-duty operation conditions.
- / Through the heat balance test under two kinds of operating conditions it has been verified to meet the requirements of special operating conditions.



A special gearbox of a domestically renowned brand

- / The double-turbine hydraulic torque converter has a wide range of high efficiency and a large torque conversion ratio. Whether or not the main and auxiliary turbines output at the same time is determined according to the load change, so that a larger torque ratio is available to adapt to the current operating conditions where the actual two-forward-gear and one-reverse-gear mode is equivalent to the four-forward-gear and two-reverse-gear mode.
- / The parking brake is integrated with the gearbox, simple and reliable.
- / With a large market share, high reliability, fast parts supply and good economy.



Domestic heavy-duty caliper drive axle

- / With a low failure rate, the caliper brake provides fully hydraulic power braking and large braking force.
- / The welded axle housing optimized by CAE analysis enables a high static load safety factor and a large load bearing capacity of the axle.
- / With a main gearbox for heavy-duty trucks and mine cart wheels, mature and reliable.

The optimized frame structure makes the frame lighter and stronger

- / The bent C-shaped beam of the frame has high strength and neat appearance.
- / The optimized inner rib-equipped structure of the frame reduces the weight and increases the strength.

Safety

- / Neutral start protection is provided. An standard OPS seat sensing system is provided to improve operating safety.
- / The multiway valves are obliquely connected to form a back pressure valve, which has a mast forward tilting self-locking function.
- / Fully hydraulic power braking and a large-capacity accumulator are used to ensure safe and reliable braking.
- / The counterweight profile is optimized to improve the rear view. An optional visual reverse radar is provided to improve operation safety.

Energy and efficient

- / The fully hydraulic load-sensing steering and dual-pump merging technologies enable higher operation efficiency and less system pressure loss and energy consumption.
- / The vehicle is equipped with LED illuminators for the standard configuration, which have high performance, a long life and low energy consumption.

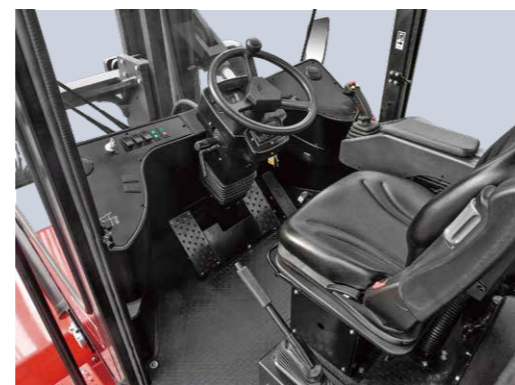
Maintenance

- / With the LCD instruments to display the relevant information of the vehicle and an engine fault to facilitate troubleshooting, the running status of the vehicle can be monitored.
- / The overturnable cab and left and right swing-up hoods form an open maintenance space and the vulnerable parts such as the oil filter, air filter, etc. are provided in easy-to-reach positions, to enable easy maintenance of the vehicle.
- / A cloud smart module provided for the standard configuration enables remote control and diagnosis.



Comfort

- / The ergonomic joystick with a good feel and integrated functions enables easy and comfortable combined operations.
- / The fully-suspended seat with an adjustable turning device and the cab equipped with a cooling and heating air conditioner and a reading light make the driving experience more comfortable.
- / Electro-hydraulic steering enables easy operations and less driving fatigue.



Standard Specification

- / Standard fork
- / Standard fork carriage
- / Integral prong-adjustable side shift fork
- / Duplex wide-view mast
- / Cabin
- / Cab front wiper
- / Cab rear wiper
- / Suspended seat
- / Vehicle toolkit
- / Traction device
- / Rearview mirror
- / Air filter
- / High-position exhaust
- / Electro-hydraulic steering
- / Steering wheel adjusting device
- / Fully hydraulic power braking
- / Hydraulic oil level meter
- / Self-locking valve in the tilting fuel circuit
- / Speed limit valve in the lifting fuel circuit
- / Quadruple multi-way valve
- / Cable-type stop brake
- / Hydraulic oil suction filter
- / Hydraulic oil heat dissipater
- / Neutral gear safety switch
- / Main power switch
- / Water thermometer
- / Electric horn
- / Reverse buzzer
- / Combination headlights
- / Combination tail lights
- / Warning light
- / LCD instruments
- / Engine hour counter
- / Oil gauge
- / Pre-heating indicator
- / Charge indicator
- / Engine oil pressure alarm light
- / Oil-water separator indicator
- / Keyed engine flameout
- / Cloud smart module

Options

- / User specified color
- / Solid tire
- / Fuel tank cap locked
- / Basin-shaped double air filters
- / Exhaust fire protection device
- / Fire extinguisher
- / Blue light
- / Rear work light
- / Speed limit alarm device
- / Weighing system
- / Rearview system
- / Forks of other specifications

