



HANGCHA GROUP CO., LTD.

Factory site: 666 Xiangfu Road,
Hangzhou, Zhejiang, China (311305)

Tel: +86-571-88926735 88926755
Fax: +86-571-88926789 88132890

sales@hcforklift.com
www.hcforklift.com



Follow us on
Facebook



Follow us on
YouTube



Follow us on
WeChat



Download "Hangcha
Forklift" App



ISO45001
ISO45001:2018



ISO14001
ISO14001:2015



ISO9001
ISO9001:2015



HANGCHA trucks conform
to the European Safety
Requirements.

2024 VERSION 1.1 COPYRIGHT 2024/01

HANGCHA GROUP CO., LTD. reserves the right to make any changes without notice concerning colors, equipment, or specifications detailed in this brochure, or to discontinue individual models. The colors of trucks, delivered may differ slightly from those in brochures.



X Series Internal Combustion Forklift

with capacities of 20,000 to 35,000kg

The World of Hangcha
SINCE 1956





Appearance

- / The exterior has a family appearance and a compact and smooth style showing modern industrial aesthetics.
- / With modular and standardized design taking full advantage of the X series platform, the main parts are verified step by step in advance, so that the vehicle is highly mature.
- / The key parts of renowned brands have been verified reliable and durable by the market for many years while being used by the old products.
- / Structural parts such as the frame, mast, etc. are upgraded and optimized on the basis of existing products, and are verified through CAE analysis and testing.

Efficient

- / With the hydraulic load-sensing system to enable on-demand supply, less continuous load of the engine and less energy consumption and emissions, the work efficiency is improved significantly, and the average operation efficiency is increased by more than 15%.

Intelligentized management system (option)

- / An optional cloud intelligent forklift management system FIMS and intelligent remote monitoring are provided to better facilitate equipment management and logistics management.



Reliable



ZF gearbox



Single double-acting transverse cylinder steering axle, full hydraulic power steering and load-sensing steering gear all can provides easy steering action.



Heavy-duty traction axle with two-stage deceleration; Maintenance-free wet brake; Hydraulic release spring action parking brake provides safe and reliable.



Maintenance

- / The high-definition LCD bus instruments have bus architecture and several built-in diagnosis and management functions to enable central fault alarm, simplified operations, easy diagnosis and flexible configuration of electrical functions.
- / The tiltable cab and wide-opened hood enable easy access to the oil and water, and make maintenance more convenient.



The newly designed LCD instrument has more comprehensive functions and more stable performance. It can display the important information such as truck status and engine faults... So that the operator can understand the truck status more intuitively and facilitate maintenance.



Battery compartment is easy to open for easy maintenance.



Comfort

- / The compact integral joystick enables easy and accurate remote control. The optimized hydraulic braking curve enables smooth easy-to-control braking.
- / The adjustable suspended seat, inclinable telescopic steering column, and multidirectional adjustable console can meet the needs of different operators to the greatest extent and bring a comfortable control experience.



Suspended seat with fingertip system that can be easily adjusted to suit each customer.

Safety



Excellent all round visibility is achieved by the overall design.

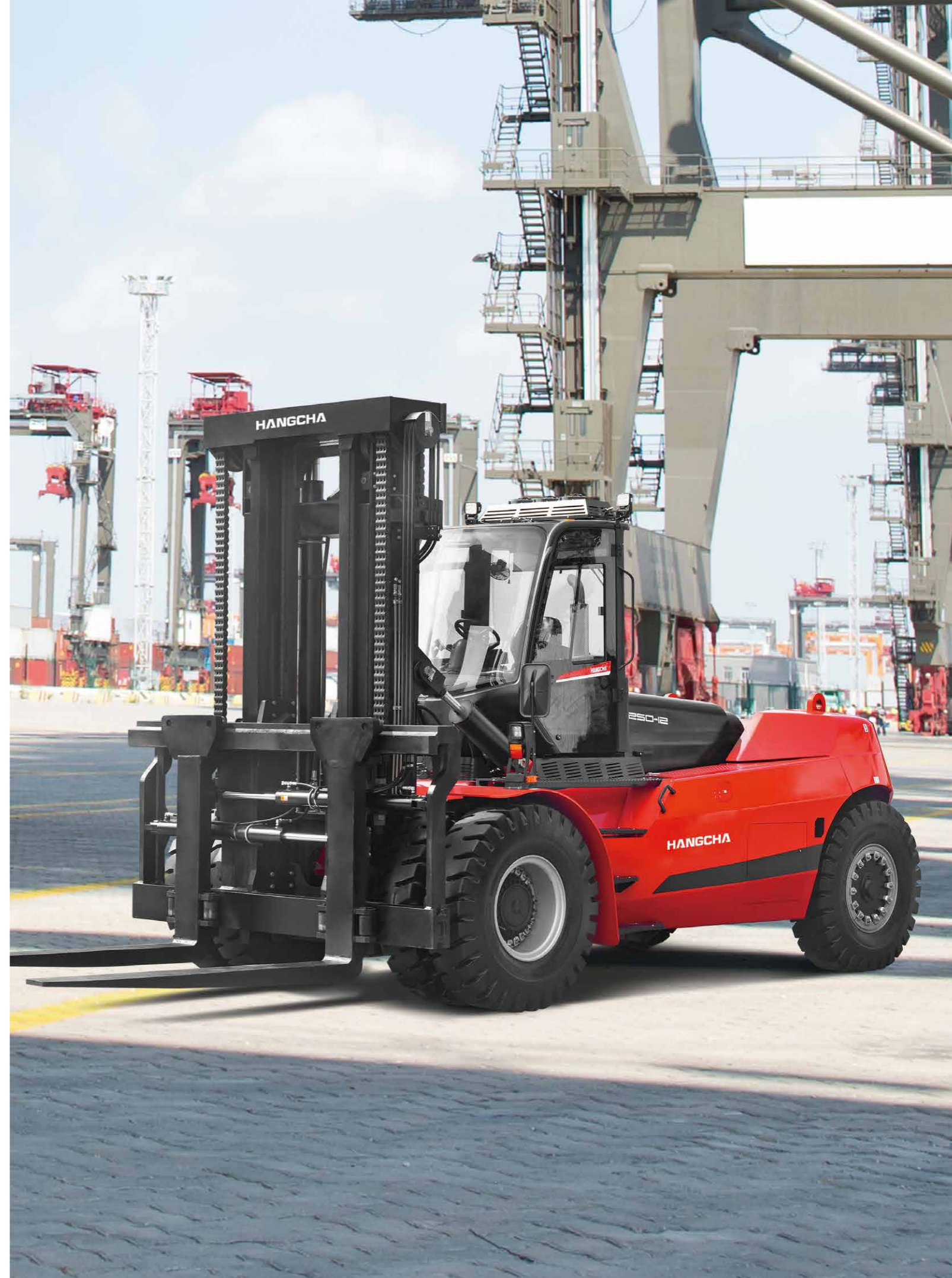


Optional imaging system with front and rear camera, increasing the safety greatly.



Fully-suspended all-round vision cab

- / The new fully-suspended all-round vision cab (HCCS) and optimized vehicle outline enable all-round sight and view.
- / The molded interior parts enable a more comfortable feel.
- / The integral frame constituted by profiled steel pipes has higher strength and better enclosure.



Features

Transmission	Standard	Options
Pneumatic tyre	●	
Solid tyre		○
Steering system		
Fully hydraulic power steering	●	
Centralized lubrication system (machine)		○
Power system		
Extended exhaust pipe	●	
Lockable fuel cap		○
Spark arrester		○
pre-cleaner air filter	●	
Truck		
Tow pin	●	
Electrostatic discharge chain		○
Rear-view mirror on right & left mudguards	●	
Separate brake oil tank	●	
Operating system		
Integrated joystick	●	
Adjustable steering column	●	
Adjustable armrest	●	
Hydraulic system		
Variable hydraulic pump system	●	
Four-way hydraulic valve	●	
Operation proportion control	●	
Cab		
Cabin	●	
Climate control system (air-conditioning and heater)	●	
Manual tilting cabin	●	
Electric tilting cabin		○
Radio	●	
Sunshade	●	
USB charging interface	●	
Clothes hanger hook	●	
Reading light	●	
1 x 24V power supply		○
1 x 12V power supply		○
License plate frame		○
Fan	●	
Lifting components		
Duplex mast	●	
Standard lifting height	●	
Optional lifting height		○
Standard fork	●	
Other fork specifications		○
Fork hook on type		○
Hydraulic Fork Positioning	●	
Independently-adjustable fork		○
Built in Sideshift	●	
Other		
Standard color	●	
User defined colour		○
Fire extinguisher (2kg/4kg)		○
Vehicle toolkit	●	

Electrical System	Standard	Options
Operator Presense System (OPS) with buzzer	●	
LCD display screen	●	
Main power switch	●	
Emergency power off switch	●	
Maintenance-free 24V lead acid battery	●	
Reverse buzzer	●	
High decible horn	●	
LED lights (entire vehicle)	●	
2 x Working light on front mudguard	●	
2 x Front working light on top of cabin	●	
2 x Rear working light on top of cabin	●	
2 x Working light on both sides of mast	●	
Reverse sensor	●	
Rearview camera system	●	
Rearview camera system with memory		○
Front & rearview camera system		○
Front & rearview camera system with memory		○
4 directions camera system with single display		○
4 directions camera recording system with single display		○
In cabin CCTV		○
Rear blue safety light		○
Front and rear blue safety light		○
Three sided blue danger zone light		○
Overspeed alarm		○
Voice reverse alarm		○
Automatic fire suppression system		○
Two-way radio		○
Weight indicator in display		○
Flashing warning light (non rotating) with control switch	●	
Tyre pressure monitoring		○
On-board diagnostics system	●	
Engine fault alarm	●	
Engine oil pressure alarm indicator	●	
Air filter warning indicator	●	
Water temperature indicator	●	
Hour meter	●	
Battery charge indicator	●	
Low hydraulic pressure alarm indicator	●	
Hydraulic oil filter warning indicator	●	
Oil gauge	●	
Fuel-water separator warning indicator	●	
Oil temperature gauge	●	
Pre-heat indicator	●	
Drive mode indicator	●	
Parking brake indicator	●	
Service indicator	●	